



Duke

Anesthesiology



.....did you ever consider doing a fellowship that makes you eligible for certification in

ICU and TEE?



.....now includes the TEE simulator!

The Duke Critical Care Medicine and Transesophageal Echocardiography Fellowship is currently accepting applications for four ACGME accredited positions

Department of Anesthesiology
Duke University Medical Center
anesthesiology.duke.edu

DUKE ANESTHESIOLOGY/CRITICAL CARE MEDICINE

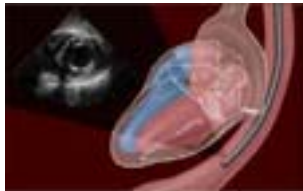
FELLOWSHIP PROGRAM

The Department of Anesthesiology at Duke University Medical Center is actively recruiting candidates for fellowship training in Critical Care Medicine (CCM) and Transesophageal Echocardiography (TEE). The ACGME approved program provides a comprehensive 1-year training program in both Critical Care Medicine and TEE, leading to board eligibility in both CCM through the American Board of Anesthesiology and in TEE through the National Board of Echocardiography.



FELLOWSHIP EDUCATION

The goal of the Fellowship in CCM / Anesthesiology is to provide trainees with background knowledge necessary for the care of critically ill patients and an appreciation of management issues unique to this patient population, in the perioperative period and elsewhere. Critical care medicine is a multidisciplinary field concerned with patients who have sustained, or are at risk of sustaining, life threatening, single or multiple organ system failure due to disease or injury. Critical care medicine seeks to provide for the needs of these patients through immediate and continuous observation and intervention so as to restore health and prevent complications. A Fellow will become competent in all aspects of recognizing and managing acutely ill adult patients with single or multiple organ system failure requiring ongoing monitoring and support.



In addition, all fellows will receive training in TEE both in the OR and in the ICU. Fellows will attain proficiency in echocardiography through hands-on experience coupled with weekly didactic sessions

including lectures and case conferences.

Clinical Features:

- ~ 18 weeks in the Trauma/Surgical ICU at Duke University Hospital; one day per week in OR performing anesthetic management and TEE
- ~ 4 weeks in the Cardiothoracic ICU at Duke University Hospital
- ~ 18 weeks in the Durham VA SICU, including postoperative management of cardiothoracic surgical patients; daily TEE exams; weekly TEE teaching conference
- ~ 6 weeks dedicated TEE training
- ~ 7-8 weeks additional elective time
- ~ Total echocardiographic experience that will significantly exceed current National Board of Echocardiography recommendations for qualification
- ~ Weekly Critical Care conferences, case presentations, and lectures covering the Critical Care core curriculum

FELLOWSHIP RESEARCH

MENTOR-GUIDED ANESTHESIA RESEARCH ASSURES SKILL DEVELOPMENT IN:

- ~ The ability to formulate clinically relevant hypotheses in critical care medicine and anesthesiology
- ~ Project design skills, to create achievable studies able to answer questions according to scientific method
- ~ Execution of research project
- ~ Introduction to statistical analysis techniques
- ~ Interpretation of results and preparation of a manuscript
- ~ Presentation of research at national meetings
- ~ Introduction to research funding and grants
- ~ Ability to critically evaluate the research of other investigators

Fellowship teaching opportunities include experience in resident education and participation in didactic sessions and other clinical teaching.

FELLOW EVALUATION

Evaluation and feedback is an important part of Fellowship education. Fellows will be evaluated on each of the six clinical competencies. Evaluations will be made by the ICU attendings; additionally, 360° evaluations will be completed by nurses, pharmacists, respiratory therapists, and other housestaff rotating in the ICU. Evaluations will be reviewed at 6 months and 1 year, allowing early and frequent feedback.



For further information, please contact:

Christopher C. Young, MD, FCCM
Associate Professor of Anesthesiology
Director, Fellowship in Critical Care Medicine
Department of Anesthesiology
Box 3094
Duke University Medical Center
Durham, NC 27710
E mail: young024@mc.duke.edu

Victoria Grossman
Program Coordinator, Fellowship in Critical Care Medicine
Phone: (919) 668-3400
E mail: gros001@mc.duke.edu
Or visit our website at:
<http://anesthesiology.duke.edu>

Critical Care Medicine Fellowship Program

Christopher C. Young, MD, FCCM
Associate Professor of Anesthesiology
Assistant Professor of Surgery
Chief - Division of Critical Care Medicine
Department of Anesthesiology
Program Director - Fellowship in Critical Care Medicine (Anesthesiology)

Application Process

Please submit application and all requested documentation to:

Dr. Christopher C. Young
Duke University Medical Center
Department of Anesthesiology, # 3094
Durham, NC 27710

Fellowship selection is based on the process used for application to the core residency program. All applicants are considered without regard to race, color, religion, gender, or national origin and must have completed an ACGME accredited residency program in Anesthesiology or its equivalent. Documentation of completion will be required. Prospective candidates are asked to complete the Department of Anesthesiology Fellowship application by downloading it at, http://anesthesiology.duke.edu/modules/anes_flwshp. In addition to the completed application, all candidates are required to submit:

1. Three letters of recommendation
 2. Curriculum Vitae
 3. One page personal statement
 4. Medical school transcript
 5. Letter of completion from the Anesthesiology residency Chairman or Program Director, or copy of Anesthesiology training certificate
 6. USMLE Test 1, 2, and 3 transcripts, or USMLE certificates
- **Canadian Medical Graduates** – in addition to the required documents, we will need a valid copy of your diploma from an LCME-accredited Canadian Medical School. We may also require a copy of your Canadian examination equivalent.
 - **Foreign Medical Graduates** – in addition to the required documents, we will need to receive a valid copy of your ECFMG certificate.

Once these documents are on file, the Fellowship Program Director reviews the credentials and makes a decision to offer an interview. When an interview is offered, the applicant is scheduled to meet with several members of the division, as well as other physicians involved in Critical Care Medicine at Duke University Medical Center (DUMC). The applicant is given an opportunity to observe rounds in the Surgical Intensive Care Units at DUMC and at the VA Medical Center, during the interview day. Following the interview, the Program Director reviews the written and verbal evaluations from the interviewers. Information from the written application and interviewer feedback is used in the final decision process. Acceptance into the program is based on

demonstrated academic qualifications, interpersonal skills, and evidence of ability to function professionally in a multidisciplinary setting. Applicants must meet eligibility specified by the ACGME.

Goals and Objectives

-Summary-

Anesthesia Critical Care Fellowship Program Mission: Including Departmental and ACGME mandated goals and objectives – monitor success or failure in meeting these objectives:

The objective of the fellowship program in Anesthesiology / Critical Care Medicine at Duke University Medical Center and the Durham Veterans Affairs Medical Center is to provide a complete 12 month training experience in all aspects of providing care to critically ill patients. Broad familiarity and expertise in the multidisciplinary approach to Critical Care Medicine will be emphasized. Nine months of training in the intensive Care Units at Duke University Medical Center and the Durham Veterans Affairs Medical Center are required. The remaining three months are electives (see page 4) of advanced clinical training and clinical research of the fellows based upon the fellow's interests and abilities. Direct faculty supervision is provided. Didactics are emphasized with daily teaching rounds with attending intensivists from the departments of Anesthesiology, Medicine, and Surgery. Lectures, Journal Clubs, research seminars, pro-con debates, and morbidity and mortality conferences are regularly scheduled. Fellows in Critical Care Medicine (Anesthesiology, Medicine, and Surgery) participate in these formal didactic sessions. At the completion of training, the fellow will have gained proficiency in the diagnosis and treatment of a wide range of illnesses and will be able to function in the role of consultant intensivist.

In addition to its emphasis on learning patient care, the Critical Care Fellowship program is structured to provide opportunities in teaching, research, and administration. In learning to be a consultant, the fellow must learn how to be a teacher. The fellow will be asked to prepare formal lectures for medical student, resident, and fellow level conferences. The fellow will also provide daily teaching to nurses, respiratory therapists, and other ancillary personnel in the Intensive Care Unit. In the last several months of training, the fellow will be asked to act in the role of "Junior Attending" and will have increased responsibility in patient management decisions and teaching.

The fellow will participate in research projects in the Intensive Care Units at Duke and the VA. Education in hypothesis development, study design, ethics of performing studies on human subjects, Institutional Review Board processes, and project funding will be incorporated into the training. The fellow will have ample opportunity to assist in obtaining patient consent and data collection. Opportunities for review and publication of results will be available. In addition, Journal Club conferences will be scheduled into the didactic program. The fellow will learn to critique published studies through critical review of journal articles. This experience will aid in the development of interpretive skills that will serve in the critical assessment of the medical literature.

The fellow will also gain experience in the administration of an ICU through observation and increasing responsibility for a number of administrative issues. The fellow will gradually share responsibility for bed triage, training of ancillary personnel in Critical Care methods, and consultation with other physicians in non-Critical Care patient units. The fellow will be familiar with the administrative issues of running an Intensive Care Unit when training is completed.

Summary Goals and Objectives:

At the completion of the training program, the successful fellow will:

- Demonstrate competence and professionalism all aspects of the management of the patient with critical illness
- Provide evidence of proficiency in critical care procedures
- Demonstrate the ability to function as part of a multi-disciplinary ICU team

Promotion:

Successful completion of the one-year continuum requires:

- Nine months of clinical exposure to intensive care medicine
- 60% attendance rate at mandatory conferences
- Overall satisfactory evaluations of clinical skills

Fellowship Program Resources

-Summary-

Suggested Reading

Journals:

- *Critical Care Medicine*
- *The Journal of the American Medical Association (JAMA)*
- *The New England Journal of Medicine (NEJM)*,
- *The American Journal of Respiratory and Critical Care Medicine*
- *Chest* (particularly the Critical Care Section)
- *Anesthesiology* (for articles pertinent to the practice of Critical Care Medicine)

You will receive a subscription to *Critical Care Medicine* with your membership in the Society for Critical Care Medicine (SCCM). This is considered the premier journal of intensive care worldwide and it will serve as the basis of our journal club. You should become familiar with all the articles.

Textbooks:

- Textbook of Critical Care Medicine by Shoemaker et al
- Critical Care Medicine: Perioperative Management by Murray et al

Pocket reference textbook.

- The Sanford Guide to Antimicrobial Therapy by Gilbert et al (often available as a service from various drug reps)
- The ICU Book, 2nd Edition by Marino
- Handbook of Critical Care by Shoemaker et al

Organizational Memberships

If you are already a resident member of the ASA, then you are a member of the ASCCA as well. If you are not a member of the ASA, you must join the parent organization before you can join ASCCA.

Fellowship Educational Fund

The Critical Care Medicine Division provides a continuing education fund for up to **\$1500/annually for reimbursement** towards your cost of textbooks, handbooks, organizational memberships, and travel & lodging for conferences/meetings

If at any time you require further assistance or have any questions or concerns, please contact Vikki Grossman, Program Coordinator, at grosm001@mc.duke.edu.